

Placement induction

www.gkf.org.uk

GIVE HOPE,
GIVE LIFE



GLOBAL KIDNEY
FOUNDATION
Give Hope, Give Life!

Who we are;

- We make a promise that we will provide the best services in the field and for that reason our clients trust us.
- Objectives
 - To relieve the sickness and advance the health of persons who suffer from kidney disease, through, but not limited to
 - The provision or assistance in the provision of support, practical advice and recreational activities
 - The provision or assistance in the provision of education among the general public and organisations on all aspects relating to kidney disease, prevention or management in ways thought fit by the trustees
 - The provision or assistance in the provision of education among the general public and organisations on all aspects relating to organ donations in ways thought fit by the trustees.
 - GKF was founded by those who have gone through the traumatic experience of renal diseases and are aware of the effects it can have on not only the patients but also on their loved ones. In establishing this project, it allows community members to access vital understanding of the most sensitive issues a renal patient might experience such as the emotional upheaval, the uneasiness they feel through the various stages of before during and after treatment like dialysis and also the lack of transplant opportunities.
 - Although there are some charitable organisations striving to fight this aggressive disease, upon research we learnt that there is still a considerable gap in addressing the renal related issues. Such concerns range from the quality of life for renal patients, the provision of facilities for them, raising common awareness about prevention and treatment, external draining matters faced by those affected, general availability of recreational activities for patients and also the varied difficulties in renal health matters faced by members from different ethnic backgrounds in particular the Black, Asian, and Minority Ethnic (BAME) communities.

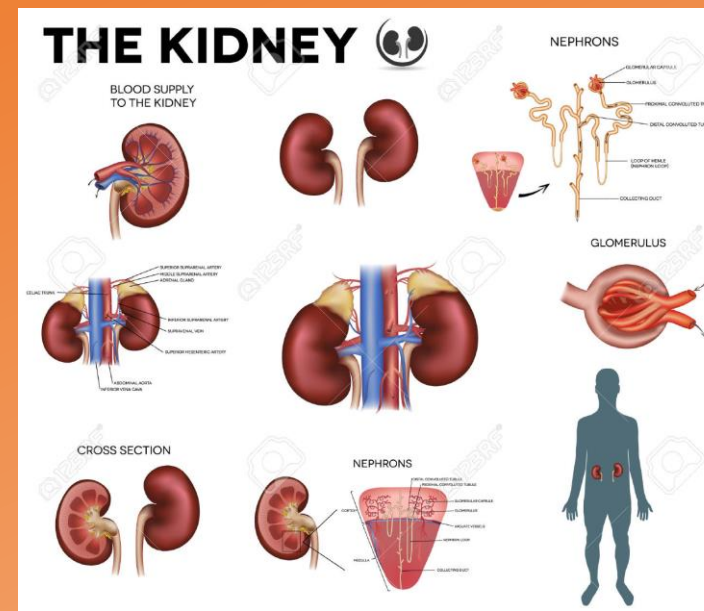
What we do;

- Global Kidney Foundation (GKF) is a registered charity in the England & Wales, charity number 1184359. The main aim of the charity is to serve humanity and provide support, practical advice, recreational activities and education among the general public and organisations on all aspects relating to kidney disease, prevention or management on all aspects relating to organ donations.
- Objectives
 - To relieve the sickness and advance the health of persons who suffer from kidney disease, through, but not limited to
 - The provision or assistance in the provision of support, practical advice and recreational activities.
 - The provision or assistance in the provision of education among the general public and organisations on all aspects relating to kidney disease, prevention or management in ways thought fit by the trustees.
 - The provision or assistance in the provision of education among the general public and organisations on all aspects relating to organ donations in ways thought fit by the trustees.
 - GKF was founded by those who have gone through the traumatic experience of renal diseases and are aware of the effects it can have on not only the patients but also on their loved ones. In establishing this project, it allows community members to access vital understanding of the most sensitive issues a renal patient might experience such as the emotional upheaval, the uneasiness they feel through the various stages of before during and after treatment like dialysis and also the lack of transplant opportunities.
 - Although there are some charitable organisations striving to fight this aggressive disease, upon research we learnt that there is still a considerable gap in addressing the renal related issues. Such concerns range from the quality of life for renal patients, the provision of facilities for them, raising common awareness about prevention and treatment, external draining matters faced by those affected, general availability of recreational activities for patients and also the varied difficulties in renal health matters faced by members from different ethnic backgrounds in particular the Black, Asian, and Minority Ethnic (BAME) communities.

How you can help;

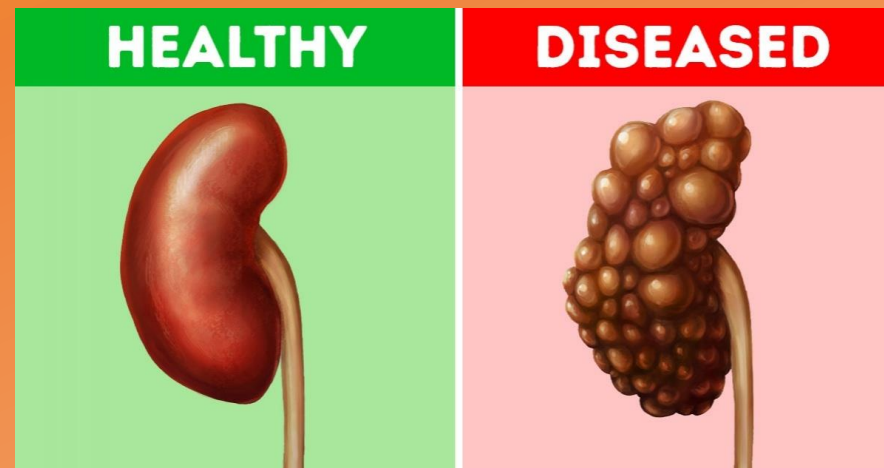
Responsibilities will include but not be limited to.

- Going on to social media to get real life dialysis stories (easier to join the groups on facebook to find people)
- Emailing to find potential partnerships (I have the template email)
- Emailing to find potential places where we can hold a workshop.
- Research on to Chronic Kidney Disease.



What we expect from you;

- Prompt and professional behaviour at all times.
- Inform us of any absences or late starts.
- Apt communication with your course manager and Global Kidney Foundation project manager.
- Showcase efficiency and initiative during project planning.
- Comply with COVID guidelines set out by government= social distancing rules, face masks must be worn, clean your work surfaces etc.
- Represent organisation in a responsible manner.
- Maintain good attendance.



What you can expect from us;

- Proper training , support and leadership.
- Safe and healthy working environment.
- Regular feedback on performance from supervisor.
- Access to the resources they need to perform their work tasks efficiently and properly.
- Fair and consistent communication and application of policies (e.g. performance, discipline, conduct).
- Credit and acknowledgement for work achievements.
- Full provision of any necessary equipment or resources.
- Contact:

Email: Jordan@gkf.org.uk

Mobile: 07497383210

We look forward to working with you!